



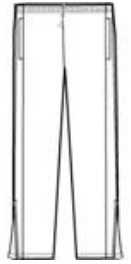
Whether worn alone or with a Sport-Tekwind shirt, these water-repellent pants provide lightweight protection.

- 100% polyester
- 100% polyester mesh lining above knees, poly lining below for easy on/off
- Elastic waistband with drawcord
- Side pockets
- Back pocket with hook and loop closure
- Extended leg zippers

**CARE INSTRUCTIONS**

Machine wash cold, gentle cycle with like colors. Use mild detergent, remove immediately. Do not allow to lay on itself when wet. Do not Bleach. Tumble dry low. Cool iron, if needed.

[Tips For Effectively Screen Printing Polyester Fabrics](#)

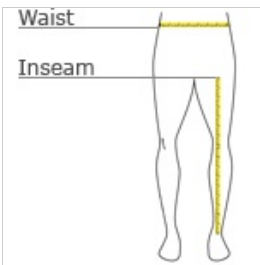


front



back

**HOW TO MEASURE**



**WAIST**

Measure waist at the height pants are normally worn, and keep tape comfortably loose.








**INSEAM**

Measure a similar style pant that fits well and is the desired length. Measure from the crotch seam to the hem.

**SIZE CHART**

	XS	S	M	L	XL	2XL	3XL	4XL
Waist	26-28	29-31	32-34	35-37	38-40	41-43	44-47	48-51
Inseam	30	31	32	32	33	33 1/2	34	34 1/2

**COLOR INFORMATION**

						
Black PMS NTR BLACK	Forest Green PMS 553 C	Graphite Grey PMS 7540 C	Maroon PMS 504 C	True Navy PMS 533 C	True Red PMS 200 C	True Royal PMS 2757C